

Location

The Lady Bay Resort is ideally located on a peninsula between the picturesque ocean bays of Warrnambool.

Situated on the stunningly rugged coastline of Victoria's Shipwrecked Coast, Warrnambool offers an abundance of natural scenery, maritime history, beautiful boutiques & delightful eateries.

Warrnambool is the largest regional city on the Great Ocean Road and boasts a charming beach side atmosphere.

Distance from Melbourne Airport: 264kms.
Distance to Warrnambool CBD: 1.5kms.
Distance to beach: 100m.

Unique features

Situated directly facing the ocean bays and Merri River, the Lady Bay Resort is ideally located just minutes away from the three main beaches of Warrnambool the Lake Pertobe Adventure Playground. The resort offers guests a range of amenities, such as an on-site restaurant, Endota Day Spa, Seasonally heated outdoor pool, & conferencing rooms. Quality facilities & excellent customer service will ensure an enjoyable, comfortable stay for all of our guests.

Featuring Standard apartments, Sea-side Spa Apartments Luxury Spa Apartments & Hotel Studio Rooms, the Lady Bay Resort is perfect for holiday makers & Corporate guests.



Guestroom features & facilities

- Spacious, well-appointed apartments
- Ensuite bathrooms
- LCD Flat screen TV
- DVD Player
- Iron & Ironing board
- Air-conditioning
- Balcony (s) or courtyard (s)
- Work desk
- Internet access
- Hairdryer
- Tea & coffee making facilities
- Spa bath (luxury & sea-side spa apartments)
- Fully-equipped kitchen (apartments)
- Laundry facilities (apartments)
- Opening windows
- Wheelchair accessible guestrooms available
- Rollaway beds, Sofa beds & Port-a-cots available (on request)
- Alarm clock/radio
- All rooms non-smoking



Guest Services & facilities

- Restaurant & lounge area
- Seasonally heated outdoor pool
- Endota Day Spa
- Conference rooms
- Video library
- BBQ area
- Ample parking
- Tourist information
- Bike rack

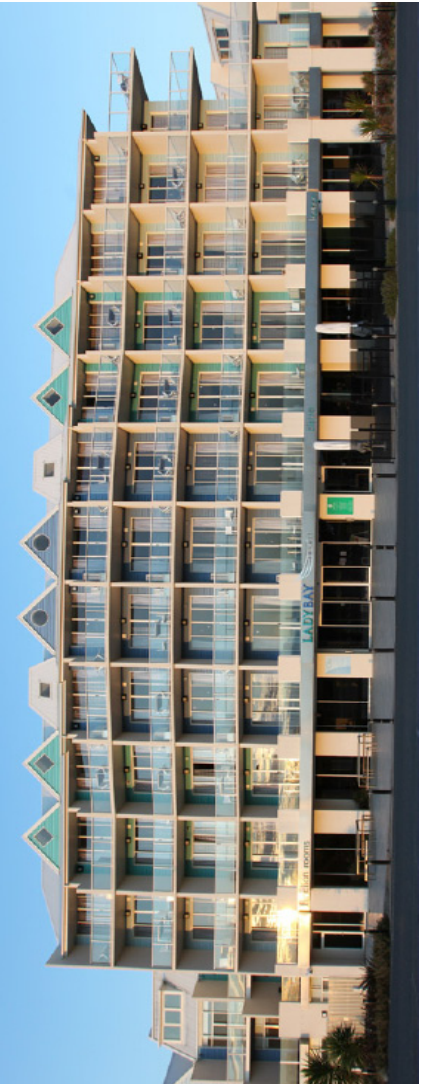
Recreation facilities

- Endota Day Spa
- Jogging, walking & 5km track close to resort

[e: accom@ladybayresort.com.au](mailto:accom@ladybayresort.com.au)

2 Pertobe rd
Warrnambool,
3280, Vic

t: 03 5562 1662





A sea-side escape at our unique resort.

Modern Apartments, Conference Retreat, Perfect Weddings, Relaxed Dining, Or Indulge Yourself In The All-Australian Endota Day Spa.

2 Pertobe rd Warrnambool. t: 03 5562 1662.

Accommodation

65 fully self-contained apartments with the option of one, two and three bedroom capacities & sixteen well-appointed hotel studio rooms. All elevated rooms features an individual balcony; many offer breathtaking views of Lady Bay, Stingray Bay & the Merri River. Exclusive to the resort, the three bedroom penthouses boast spectacular panoramic views from the Southern Ocean to the adjoining Merri River & Ocean Bays. Ground level apartments are also fitted out with two secure courtyards.

The Lady Bay Resort has varying styles of spacious accommodation. Starting with the standard apartments that are located on Pertobe Rd. The sea-side spa apartments are facing the ocean and contain a spa bath. The luxury spa apartments are housed in the hotel wing of the resort, with height & view options from level one to level four. All of the resorts apartments are fully self-contained, utilising modern facilities and offer guests flexible bedding configurations.

Restaurant, Bar & Lounge Area

Offering delicious dishes created from the best local, regional & imported produce, including award-winning wines & cheeses. Our stylish restaurant & lounge area offers relaxed dining & serves buffet style breakfast as well as a la carte lunch & dinner menus. The restaurant & lounge also offer guests all day coffee & cake service. The Lady Bay Resort's highly reputable restaurant is a convenient & satisfying venue for guets to dine.

Weddings & Events

The Lady Bay Resort is a scenic beachside venue for meetings, events & weddings. With two spacious function rooms, catering for up to 120 guests banquet style and 110 delegates theatre style. The Lady Bay Resort's restaurant and lounge areas are ideal for cocktail parties & breakout meetings. The option for utilising the whole resort for a major event can also be catered for.

Conference facilities

- Two well-appointed function rooms
- Range of breakout areas
- In-house catering
- Data/video projectors and screens
- Complete PA system
- Lecterns
- Microphones
- Adjustable house lights
- Flipcharts (on request)

Services

- Dedicated events team
- Notepads & pens (on request)
- Mints & iced water
- On-site car parking



Local Attractions

The white sandy beaches of Warrnambool, the Pavilion Cafe & Bar, Flagstaff Hill Maritime Village, Cannon Hill, Shipwreck Sound & Laser Show, Mini Golf, The Warrnambool Golf Club, Visitor Information Centre, Beach Promenade

Boating, Fresh & Saltwater fishing, Hopkins River & Falls, Beach Horse Riding, Whale Watching, Botanic Gardens, Lake Pertobe Adventure Playground & Padlle Boat Hire, Penguin Colony (Middle Island), Tower Hill Nature Reserve, Port Fairy, Great Ocean Road & the 12 Apostles .

Hours of operation

Reception: 7:30am-8pm weekdays, 8am-8pm Saturday & 8am-4pm Sundays.

Restaurant: 7:30am-8:30pm (flexible) weekdays, 8am-8:30pm (flexible) Saturday & 8am-4pm Sundays.